

Post Exit Follow Up and Programs To Secure Hard Earned Successes

The Journey Of Healing Begins With Home

“We will all, at some point, encounter hurdles to gaining access and entry, moving up, and conquering self-doubt, but on the other side is the capacity to own opportunity and tell our own story.” — Stacy Abrams

Meet The Panel



Nicole Carnero, Clinical Director of the Families Program
Miami, FL



Patricia Bosman, Executive Director
St. Louis, MO



Sandra Newson, Vice President
Miami, FL



Amy Turk, Chief Executive Officer
Los Angeles, CA



Carey Dougherty, Chief Development Officer
Santa Rosa, CA



Introduction

In the intricate tapestry of human experiences, few challenges are as daunting as the trauma of homelessness. Yet, amid the shadows of adversity, a beacon of hope emerges – the concept of transforming homelessness from a harrowing struggle into a gateway of opportunity. In this presentation, we delve into the heart of this transformation, where resilience meets support, and where the journey from despair to empowerment is guided by compassionate interventions. Join us as we navigate the inspiring landscape of converting the echoes of homelessness into resounding windows of opportunity, fostering lasting change for those who have walked this arduous path.

Nicole Carnero Clinical Director of the Families Program - Lotus House Women's Shelter

Lotus House where hope blossoms
sundari foundation, inc.



Safety Plans and Exit Resource Guides

Safety

- ❖ Communication
- ❖ Community
- ❖ Transportation
- ❖ Health Services
- ❖ Supporting Resources
- ❖ Skills

Resource Guide

- ❖ Domestic Violence/ Victim Services
- ❖ Education
- ❖ Food and Financial assistance
- ❖ Identification resources
- ❖ Legal assistance resources
- ❖ Health Care
- ❖ United States postal services
- ❖ Pet services



Continue Support

Exiting

- Warm hand off to Housing Program
- Furniture and Supplies
- Transportation
- Utilities
- Benefits
- Medication

Alumni

- Employment opportunity
- Access to employment resources and education resources
- Holiday
- Back to school
- Community Drive
- Volunteer

"Everyone can rise above their circumstances and achieve success if they are dedicated to and passionate about what they do."

~ Nelson Mandela

It Takes a Village Beyond Exits



Residence

- Internship
 - Operations
 - Retail
 - Kitchen
- Vocational
 - Security
 - Certifications
 - GED



Alumni

- Operation Manager
 - Daily operations
 - Peer support
- Natural Helpers
 - Alumni assisting current guest with support



Leadership

- Director
 - Growth within the team
 - Leadership
- Youth Navigator
 - Connecting with Alumni
 - Assisting with continued resources

Patricia Bosman Executive Director - The Haven of Grace



Multi Year Support Plan

Three Programs That Lead To Success

- Temporary maternity shelter pre- and post-natal support for up to one year after delivery
- Transitional living, educational and employment readiness support for up to two years
- Wholistic family support for 10 years after the first child is born at the shelter





Sandra Newson
Vice President of Resident Services
CARRFOUR SUPPORTIVE HOUSING



**Twenty-one
communities
completed and
four in development.**



COMPONENTS OF PSH

- Resident pays no more than 30 percent of income for rent and utilities
- Resident has a lease
- Services are flexible & voluntary
- Services are resident-driven they write their story.
- Level of services and need changes over time.
- Community integration
- Preparing residents for Permanent Housing



Moving on starts at move in!

Housing Stability Plans

- ❖ Increase income
- ❖ Housekeeping
- ❖ accessing mainstream benefits
- ❖ employment assessments
- ❖ education assessments
- ❖ Financial Literacy
 - Budgets: with and without assistance
 - Banking
 - Repair Credit
- ❖ Resolve outstanding utility balance
- ❖ Get on waitlists (affordable or PHA)
- ❖ Clear up all outstanding PHA issues
- ❖ Increase Income!

What's next after PSH?

AFFORDABLE HOUSING

Working with PHA's

Connect with PHA and establish process for referrals

Make sure residents are ready to move when issued a voucher

Project Based Vouchers

Mainstream Section 8 Vouchers

Low Income Tax Housing Credit Program (LIHTC)
30% - 60% Area Median Income (AMI) Affordable
60% - 120% AMI Workforce Housing
State Housing Programs (similar to HCVP)

Amy Turk
Chief Executive Officer - Downtown Women's
Center



HUD Domestic Violence Bonus Program



U.S. Department of Housing & Urban Development/DV Bonus Continuum of Care Program

Purpose: To provide survivor-specific housing/services and coordinated entry alignment/enhancements

Target Populations: survivors of domestic violence, dating violence, sexual assault, stalking (Category 4 of HUD Homeless Definition), Fleeing or attempting to flee, Head of Households over 18 years old, 50% below Area Median Income

Budget Requirements: 25% match of requested amount: cash or in-kind, Reimbursement based contract

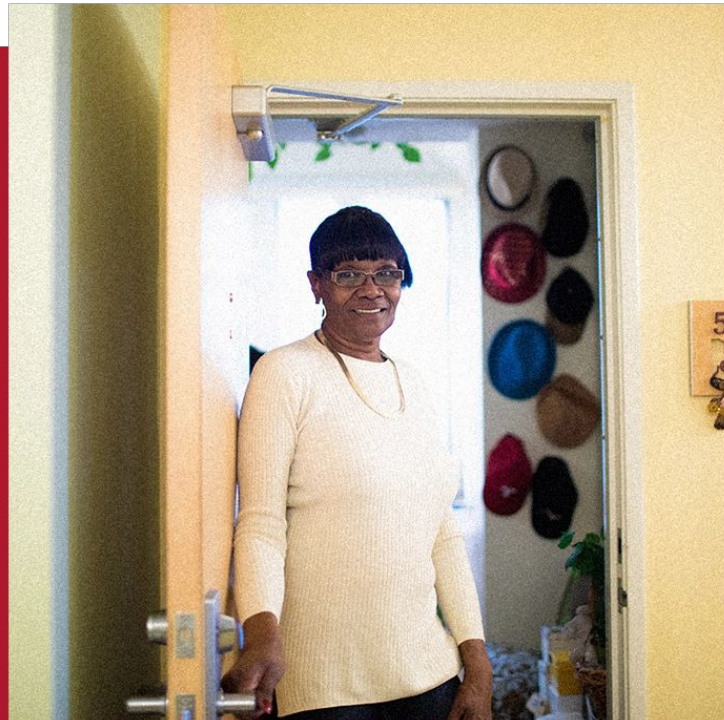
Three Components:

- 1.Supportive Services Only/Coordinated Entry
- 2.Joint Component Transitional Housing (TH) to Rapid Rehousing (RRH)
- 3.Rapid Rehousing (RRH) only

Downtown Women's Center Provides RRH (following the Domestic Violence Housing First Model):

- Scattered Site & Transition in place
- Financial Assistance (for up to 24 months)
 - Application fees
 - Child care
 - Education Services & Employment assistance
 - Moving arrangements
 - Transportation
- Services:
 - Advocacy
 - Assistance in locating and maintaining employment
 - Case management
 - Crisis/emergency support
 - Help repairing credit and rental history
 - Mental health counseling for the survivor and children
 - Ongoing support with landlords to prevent evictions
 - Substance abuse and/or mental health counseling
 - Support and assistance with children and child custody related matters

Post Exit Support HUD DV - Bonus Program



What Works

- Flexibility

Challenges

- Family Composition
- Additional supports for sub-populations
- Lack of affordable housing/landlords
- Striking the right budget balance

Safety Planning

- Starts in the beginning, but the model itself is a safety plan via stabilizing people in permanent housing with financial supports

Carey Dougherty
Chief Development Officer

Catholic Charities of the
Diocese of Santa Rosa



Caritas Village
Love for all



Meeting the needs of unhoused clients:

Homelessness Solutions

Street Outreach

Drop-in (Dignity) Services

Emergency Shelter

Safe Parking

Recuperative Care

Housing Case Management and
HUD-Certified Counseling

Youth & Family Programs

Permanent Supportive Housing

"One door" approach to
accessing services



- ❖ Support long-term stability and independence
- ❖ Work in partnership with clients to help them address challenges and meet goals
- ❖ Provide ongoing sense of community and serve as resource when emergencies arise



Permanent Supportive Housing



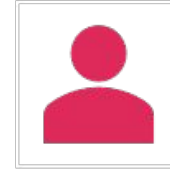
House the most vulnerable and keep them housed



Public events to create a sense of community



Provide support with vouchers connecting with resources



Case management



Property management (lease signings, maintenance orders, tracking rent, etc.)



Maintain strong relationships with property owners/ advocate on clients' behalf



Perform inspections

Homelessness prevention and post-exit support

Financial Stability

- ❖ Budgeting
- ❖ Savings
- ❖ Banking
- ❖ Debt management
- ❖ Coaching

Housing

- ❖ Fair housing
- ❖ Tenant rights
- ❖ Financial aid
- ❖ Homeless services referrals
- ❖ “Welcome home” kits

Credit

- ❖ Credit counseling
- ❖ Credit education
- ❖ Credit report
- ❖ Fraud education

Homelessness prevention, cont'd

Food Access & Nutrition Education

- ❖ Food distributions
- ❖ Food pantries
- ❖ Nutrition education

Outreach/ benefit enrollment

- ❖ Special events
- ❖ MediCal/ CalFresh
- ❖ Resource navigation

Once stably housed...

Post-residential Program for Transitional Living Program (“TLP”) for 15 women and their babies

- ❖ Continued case management for up to 1 year
- ❖ Continued childcare for up to 1 year
- ❖ Housing stipend for up to 1 year
- ❖ Wellness visits as needed
- ❖ Access to weekly diaper and food distribution
- ❖ Community engagement opportunities/ gatherings
- ❖ Mentorship program

Home is the foundation of our lives.



**NATIONAL
WOMEN'S
SHELTER
NETWORK**



Q&A