

Trauma Informed, Wrap Around Supports, Job
Readiness Training, Financial Literacy, Securing
Benefits, and Enriched Programming for
Successful Exits and Long Term Stability

Wednesday, September 6, 2023
Miami, Florida



National Women's Shelter Network, LLC

Our Presenters



Olga Golik
Citrus Health
Network, Inc.



Shakoya Green Long
Thomas House Family
Shelter



Heather Hilligoss
Rose Haven



Stephanie Padro
Lotus House Women's
Shelter



Ashley Rogers
Crossroads Rhode Island



Monica Vignes-Pitan
Legal Service of Greater
Miami



Jennifer Watkins
Crossroads Rhode Island



INTERGENERATIONAL TRAUMA & HOMELESSNESS



Jennifer Watkins, VP of Emergency Shelter and Housing Problem Solving
Ashley Rogers, Director of Family and DV Shelter Services
Crossroads Rhode Island



National Women's Shelter Network, LLC

What is Intergenerational Trauma?

The transmission of the effects of trauma from one generation to the next

Example 1: Intergenerational Violence A child watches their mother endure abuse from her romantic partner. The child then grows up to accept and/or perpetrate abuse in romantic relationships.

Example 2: Intergenerational Poverty A child who grows up in poverty is more likely to experience poverty as an adult. The child will not inherit any wealth from their parent(s) and will attend schools with fewer resources.

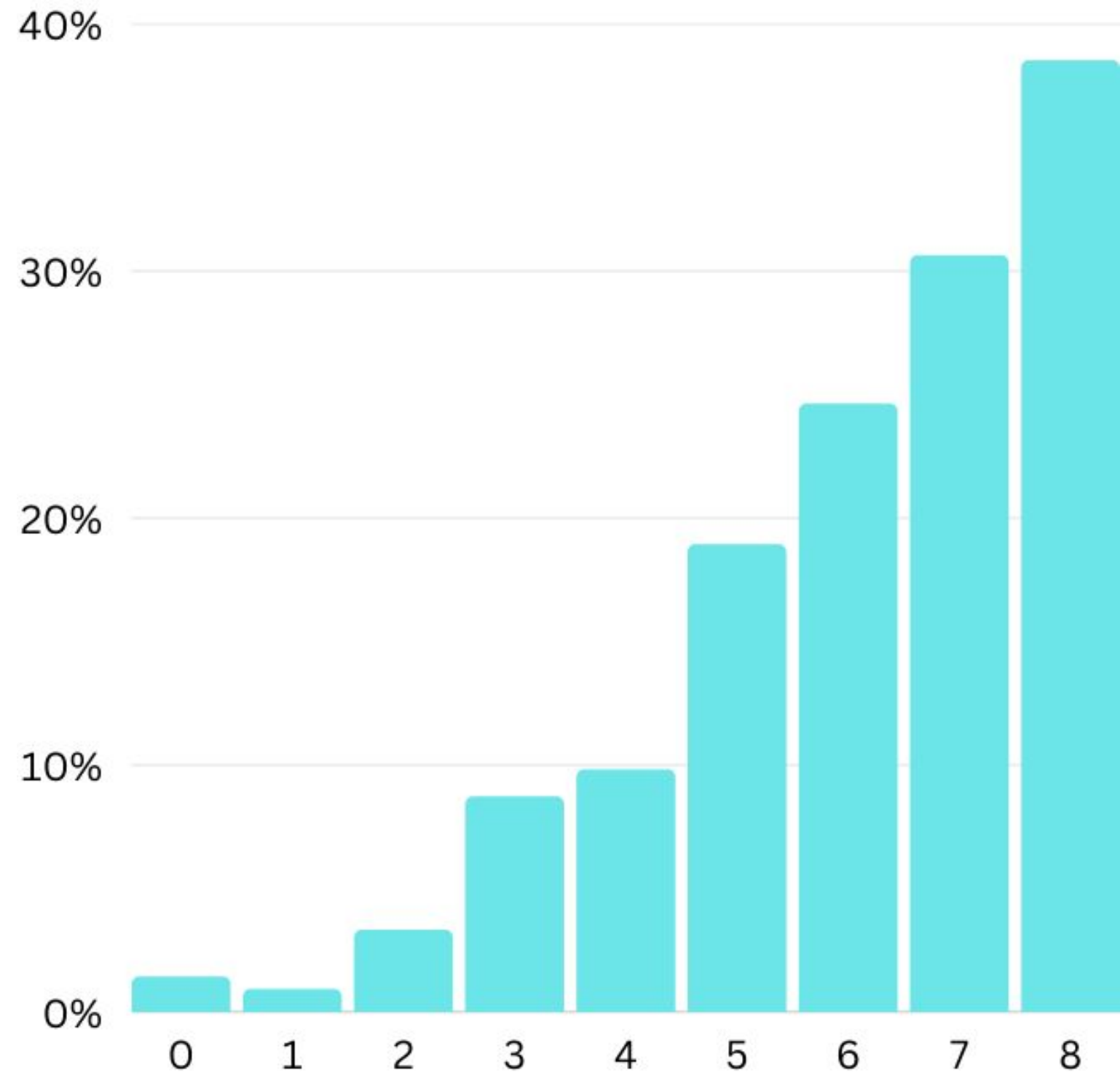


Intergenerational Trauma & Homelessness

- Few studies have studied intergenerational trauma and homelessness
- Intergenerational trauma may be associated with homelessness through the following processes:
 - Isolation, family estrangement, decreased protective factors
 - Increased risk of SUD and mental health challenges



Proportion of individuals experiencing homelessness by childhood adversity score



Consequences: Trauma and Homelessness

- Hypertension, heart attack and diabetes 2x more prevalent
- SUD 3x more prevalent
- Significant developmental effects on children
 - Increased risk for serious health problems
 - increased risk of of emotional/behavioral problems
 - Lower academic performance
- Unhoused people die up to 30 years sooner than their housed peers



Sources

Cutuli, J. J., Montgomery, A. E., Evans-Chase, M., & Culhane, D. P. (2017). Childhood adversity, adult homelessness and the intergenerational transmission of risk: A population-representative study of individuals in households with children. *Child & Family Social Work, 22*(1), 116–125.

Narayan, A. J., Kalstabakken, A. W., Labella, M. H., Nerenberg, L. S., Monn, A. R., & Masten, A. S. (2017). Intergenerational continuity of adverse childhood experiences in homeless families: Unpacking exposure to maltreatment versus family dysfunction. *American Journal of Orthopsychiatry, 87*(1), 3.



Barriers to Achieving Financial Stability and Long Term Housing Success

Panel Discussion



Barriers to Achieving Financial Stability and Long Term Housing Success

Employment Instability

Legal Issues

Poor Public Transportation (Florida)

Access to Health Care

Unmanaged Mental Health Conditions

Inadequate Supportive/ Wrap Around Services

Financial Burdens/ Debt

Lack of Affordable Housing

Intergenerational Trauma

Lack of Behavioral Health Providers

Limited Access to Resources

Inflation

Inadequate Support System

Lack of Health Insurance

Short Term Rental Subsidies

Long Waitlists for Subsidized Housing Opportunities

Blocked Access to Publicly Funded Housing

Limited Permanent Supportive Housing Opportunities

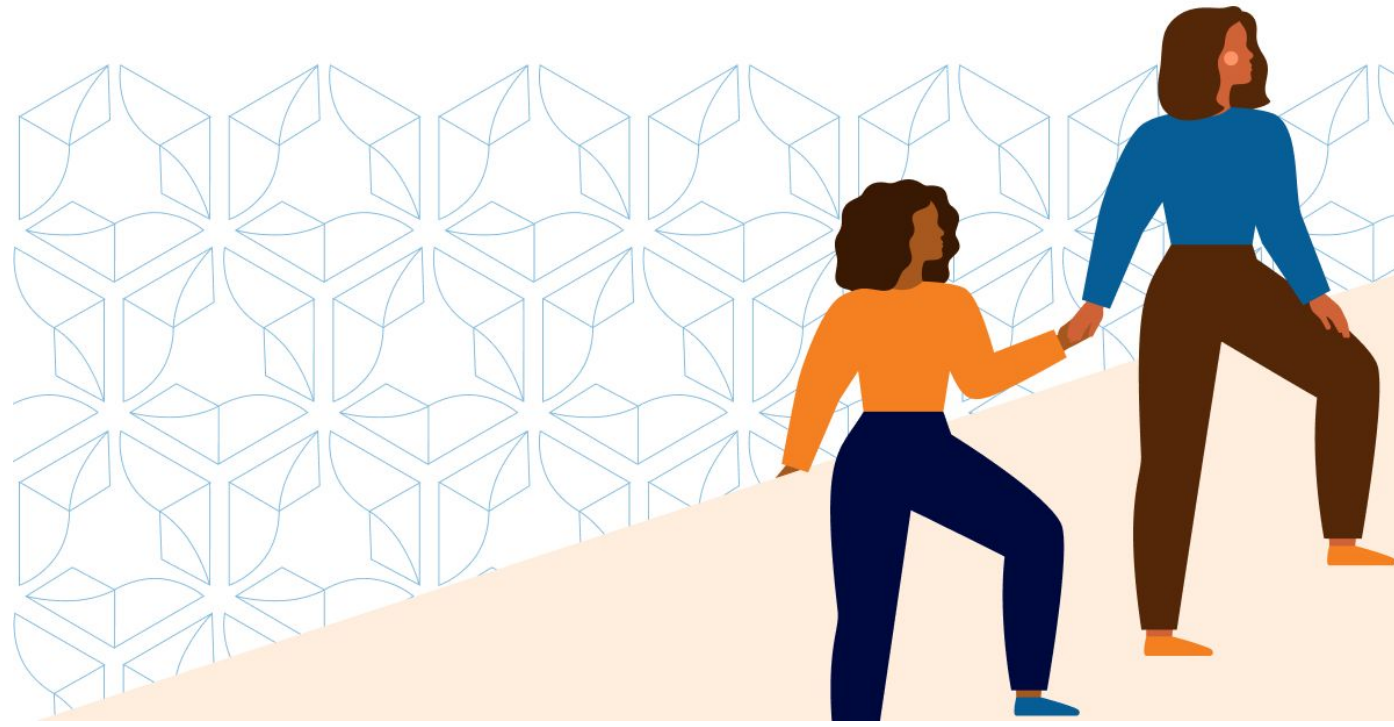
Lack of Livable Wage Jobs

Misinformation about Tenant Rights

What's Working?

Panel Discussion





Promoting Connections

Participation in Follow Up Services

Advocating for Appropriate Housing

Vocational and Life Skills Education

Addressing Physical, Mental, and Emotional Health



THANK YOU

Olga Golik, Esq
Citrus Health Network, Inc.
Hialeah, FL
olgag@citrushealth.com

Shakoya Green Long
MA/MSW/ACSW
Chief Executive Officer
Thomas House Family Shelter
Garden Grove, CA
shakoya@thomashouseshelter.org

Heather Hilligoss
Program Director
Rose Haven
Portland, Oregon
hhilligoss@rosehaven.org

Stephanie Padro, LMFT
Deputy Director of Clinical
Programs
Lotus House Women's Shelter,
Miami, FL
stephanie@lotushouse.org

Ashley Rogers
Director of Family and Domestic
Violence Shelter Services
Crossroads Rhode Island
Providence, RI
arogers@crossroadsri.org

Monica Vignes- Pitan
Executive Director
Legal Services of Greater Miami
Miami, FL
mviguespitan@legalservicesmiami.org

Jennifer Watkins
Vice President of Emergency Shelters
and Housing Problem Solving
Crossroads Rhode Island
Providence, Rhode Island
jwatkins@crossroadsri.org

